

WEST LONDON CAREERS HUB

Health and Social Care



SUPPORTED BY
MAYOR OF LONDON



THE **CAREERS &
ENTERPRISE**
COMPANY

Health and Social Care

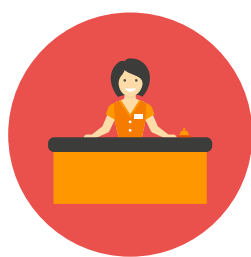
There are many and varied job roles in Health and Social Care and a career in this sector means you will play a vital role in looking after people's health and well-being.

This sector will need up to 520,000 more workers by 2035 to meet growing demand for care and support. Work in Health and Social Care could include work in the local community, an individual's home, a care home, a hospital, a doctor's surgery or at a dental surgery to name but a few locations. In West London around 86,000 people work in the health sector.

Examples of roles in Health and Social Care



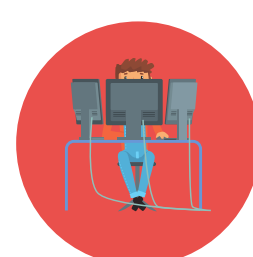
Care Worker



Receptionist



Nursery Worker



Administrator

Skills required in online job vacancies in West London



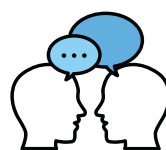
Communication



Detail-orientated



Customer service



English



Organised



Writing

Some employers who have been recruiting in the West London

- NHS
- Churchill Healthcare
- Gold Care Homes Ltd
- Care UK
- Voyage Care
- Achieve Together

Further information

www.gov.uk/apply-apprenticeship

www.prospects.ac.uk/jobprofiles/

<https://amazingapprenticeships.com/apprenticeships/>

<https://nationalcareers.service.gov.uk/jobs.communitycare.co.uk/>

www.socialcare.co.uk/

WEST LONDON

CAREERS HUB

Contact details

Website: www.wlcareershubs.com

Email: info@wlcareershubs.com



SUPPORTED BY
MAYOR OF LONDON



THE **CAREERS &
ENTERPRISE**
COMPANY